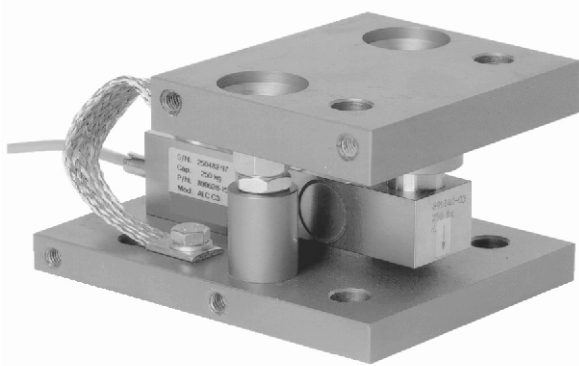


## ACB Self Aligning Mount



### DESCRIPTION

The ACB self aligning silo mount, combined with the ACB load cell family, provides an ideal solution for process control, batch weighing, silo/hoppers and belt scale applications.

The ACB mount permits controlled movement in all directions. The design allows the cell to be fitted after installation of the mount.

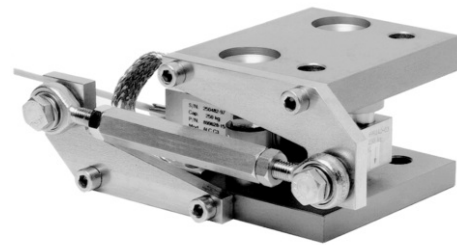
Unless major load movement is anticipated, the ACB mount eliminates the need for stay rods. An optional stay rod assembly, which can be bolted to the mount when required, is available.

### FEATURES

- Capacities: 250 - 2000kg
- Hardened components at all bearing surfaces
- Rocker pin load introduction
- Mechanical protection of the critical load introduction area
- Built in horizontal movement control and lift-off protection
- Load cell (re)placement after installation of the mount

### OPTIONAL FEATURES

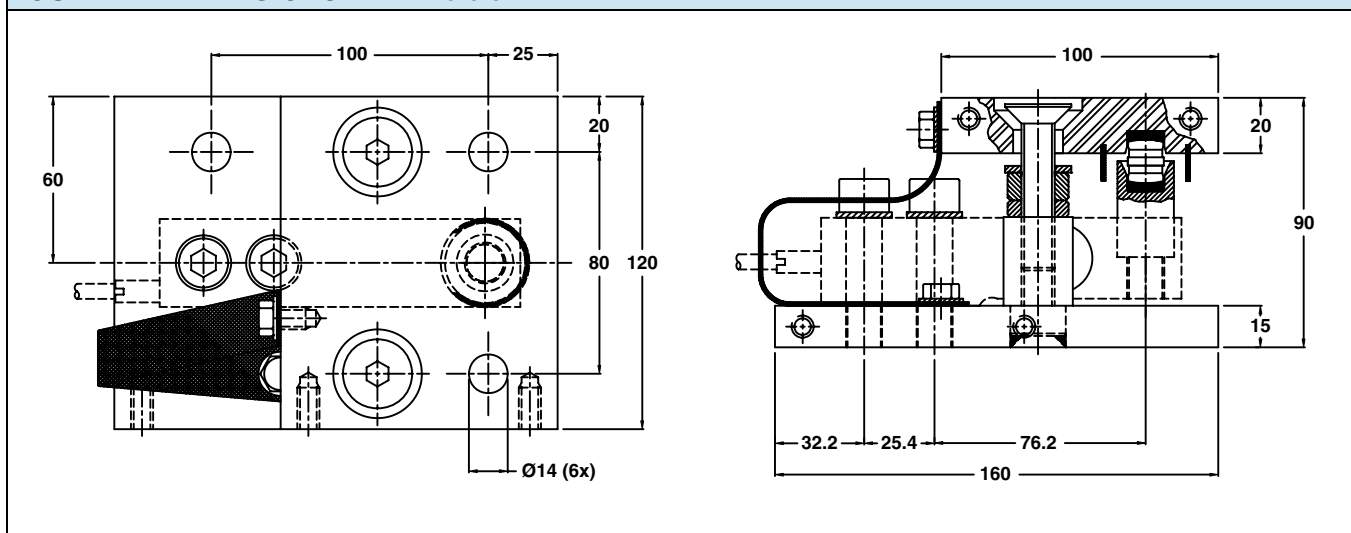
- Stainless steel or Nickel plated steel versions available
- Optional stay rod assembly
- Can be used also for ACB 0.5 - 2ton



### APPLICATIONS

- Process control
- Batch weighing
- Silo/hopper weighing
- Belt scale weighing

### OUTLINE DIMENSIONS in millimeters



**ACB FOOT ASSEMBLIES**



**FEATURES**

- Capacities: 250 - 2000kg
- Hardened components at all bearing surfaces
- Self aligning, rocker pin load introduction
- Stainless steel construction, suitable for harsh environments

The ACB foot assemblies, together with the ACB load cell family, are an ideal solution for medium capacity belt, pallet and platform scales.

The stainless steel height adjustable and non-adjustable foot assemblies provide excellent load introduction to the load cell while maintaining an overall low profile. The rocker pin based design allows flexibility in platform design without compromising overall system performance.

The rubber foot assembly provides a high performance, shock absorbing, load introduction. The foot is made of yellow passivated st37 and uses hardened components at all bearing surfaces.



**FURTHER INFORMATIONS**

Mount / Foot	Height, ACB + assembly (mm)	Outline drawing	
		Stainless steel	Nickel plated
Height Adj. Foot	63+3/67+3 (2t)	499134	
Rubber Foot	60/64 (2t)		499133-00
Self Aligning Mount	90	499085-10	499085-00
Stay Rod Assembly	90	499068-10	499068-00
Mount / Foot	Assembly guidelines		
Self Aligning Mount	AG 10/06-109/02		
Stay Rod Assembly	AG 10/06-200/02		

## Disclaimer

All product specifications and data are subject to change without notice.

Vishay Precision Group, Inc., its affiliates, agents, and employees, and all persons acting on its or their behalf (collectively, "Vishay Precision Group"), disclaim any and all liability for any errors, inaccuracies or incompleteness contained herein or in any other disclosure relating to any product.

Vishay Precision Group disclaims any and all liability arising out of the use or application of any product described herein or of any information provided herein to the maximum extent permitted by law. The product specifications do not expand or otherwise modify Vishay Precision Group's terms and conditions of purchase, including but not limited to the warranty expressed therein, which apply to these products.

No license, express or implied, by estoppel or otherwise, to any intellectual property rights is granted by this document or by any conduct of Vishay Precision Group.

The products shown herein are not designed for use in medical, life-saving, or life-sustaining applications unless otherwise expressly indicated. Customers using or selling Vishay Precision Group products not expressly indicated for use in such applications do so entirely at their own risk and agree to fully indemnify Vishay Precision Group for any damages arising or resulting from such use or sale. Please contact authorized Vishay Precision Group personnel to obtain written terms and conditions regarding products designed for such applications.

Product names and markings noted herein may be trademarks of their respective owners.